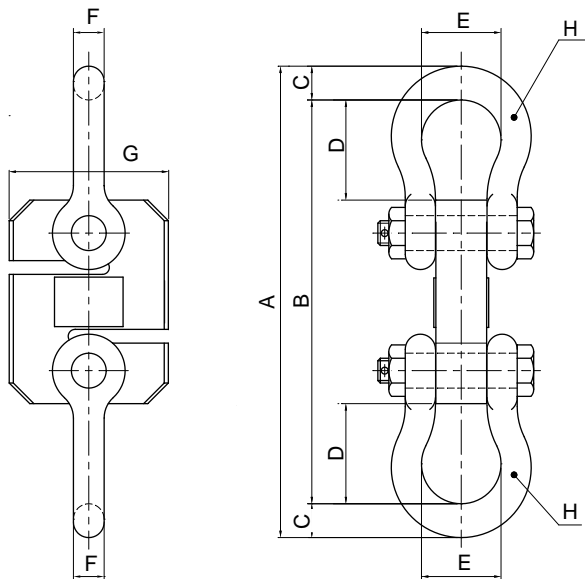


## Model TLC Series

Tension Load Cell (500kg ~ 5t)



The model TLC series, designed for tension measurement and weighing applications, are reliable and easy to install .

- Durable design provide high safety.  
(Ultimate overload rating 500 %)
- Alloy tool steel construction for high accuracy.
- Electroless nickel plated for corrosion resistance.

### SPECIFICATIONS

MODEL	TLC
Rated capacity (R.C.)	500Kg, 1t, 2t, 3t, 5t
Rated output(R.O.)	1.5mV/V $\pm$ 0.25%
Non-linearity	$\leq$ 0.03% R.O.
Hysteresis	$\leq$ 0.03% R.O.
Non-repeatability	$\leq$ 0.03% R.O.
Creep error	$\leq$ 0.03% in 20min.
Zero balance	$\leq$ 1% R.O.
Compensated temperature range	-10 ~ 70°C
Operating temperature range	-20 ~ 80°C
Temp. effect on rated output	$\leq$ 0.05% LOAD/10°C
Temp. effect on zero balance	$\leq$ 0.05% R.O./10°C
Terminal input resistance	350 Ohms $\pm$ 3.5 Ohms
Terminal output resistance	350 Ohms $\pm$ 5 Ohms
Insulation resistance (Min.)	2000 MOhms at 50V DC
Excitation Voltage	10V(Recommended) /15V(Maximum)
Electrical connection	$\phi$ 9mmx6m(22AWG x 4Core Shielded)
Protection class	meets IP 67
Safe overload	250% R.C
Ultimate overload	500% R.C

### ORDERING INFORMATION

**TLC - 3t**

MODEL CAPACITY  
500Kg, 1t, 2t, 3t, 5t  
(4.90, 9.8, 19.6, 29.4, 49.0KN)

### WIRING INFORMATION

RED : EXC. (+) WHITE : EXC. (-)  
GREEN : SIG. (+) BLUE : SIG. (-)  
BARE : GND

### Dimension-mm

Rated Capacity	A	B	C	D	E	F	G	H	Weight (kg)
500kg~1t(4.90KN~9.8KN)	255	220	17.5	54	42.9	16	78	"Crosby" Shackle G-2130, 5/8	4.0
2t ~ 5t ( 19.6KN~49.0KN)	342.8	293.6	24.6	72.8	58	22.4	116	"Crosby" Shackle G-2130, 7/8	8.3

\* Specifications are subject to change without notice

AUG.2002