

Model OSW Series

Shear Beam Load Cell (500Kg ~ 5t)

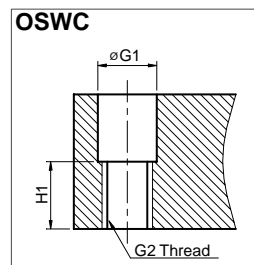
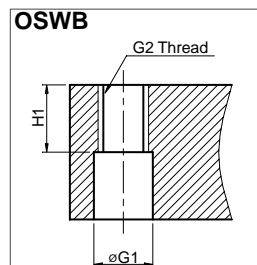
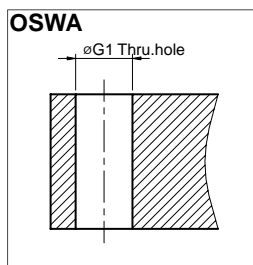
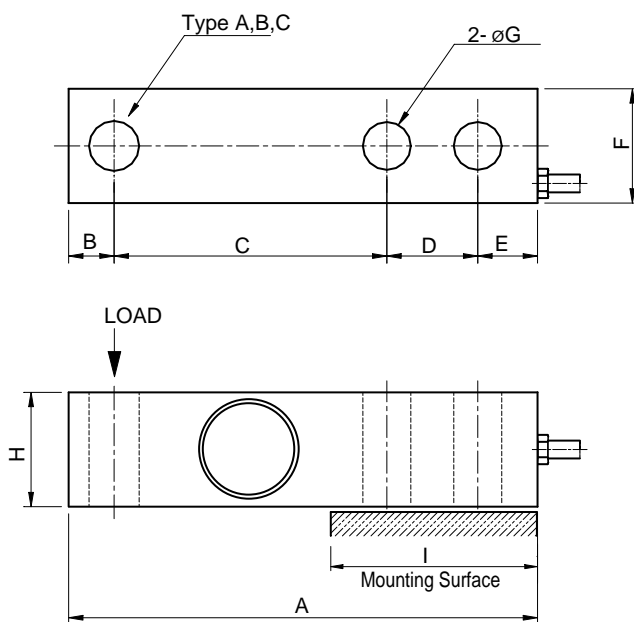


The OSW series single ended shear beam load cell is designed for high accuracy platform scales and a variety of process weighing applications.

- 17-4PH stainless steel construction for high accuracy and corrosion resistance.
- Fully welded seal with stainless steel cover for hostile environment applications.

SPECIFICATIONS

MODEL	OSWA,OSWB,OSWC
Rated capacity (R.C.)	500kg, 1,2,3,5t 1,2,4,5,10Klb
Rated output(R.O.)	2mV/V ± 0.25%
Non-linearity	≤ 0.03% R.O.
Hysteresis	≤ 0.03% R.O.
Non-repeatability	≤ 0.02% R.O.
Creep error	≤ 0.03% in 20min.
Zero balance	≤ 1% R.O.
Compensated temperature range	-10 ~ 70°C
Operating temperature range	-20 ~ 80°C
Temp. effect on rated output	≤ 0.02% LOAD/10°C
Temp. effect on zero balance	≤ 0.03% R.O./10°C
Terminal input resistance	400 Ohms ±20 Ohms
Terminal output resistance	350 Ohms ±5 Ohms
Insulation resistance (Min.)	2000 MOhms at 50V DC
Excitation Voltage	10V(Recommended) /15V(Maximum)
Electrical connection	500Kg~ 2t ø5mmx3m(Standard), 6m(Option) (22AWG x 4Core Shielded)
	3t~ 5t ø5mmx6m
Protection class	meets IP 67
Safe overload	150% R.C
Ultimate overload	300% R.C



ORDERING INFORMATION

OSWA - 5T

MODEL	CAPACITY
OSWA	0.5, 1, 2, 3, 5t
OSWB	1, 2, 4, 5, 10Klb
OSWC	

WIRING INFORMATION

RED	: EXC. (+)	WHITE	: EXC. (-)
GREEN	: SIG. (+)	BLUE	: SIG. (-)
BARE	: GND		

Dimension-mm(inch)

Capacity	A	B	C	D	E	F	G	G1	G2	H	H1	I	Weight
0.5~2t (4.903 ~19.61KN)	131	12.7	76.2	25.4	16.7	31.8	13.5	13.5	M12x1.75P	32	16	57	0.8 Kg (1.7 lb)
	(5.15)	(0.50)	(3.00)	(1.00)	(0.65)	(1.25)	(0.53)	(0.53)		(1.25)	(0.62)	(2.24)	
3~5t (29.42 ~49.03KN)	171	19	95	38	19	38	20	20.5	M20x2.5P	38	19	76.2	1.8 (4.0)
	(6.71)	(0.74)	(3.74)	(1.49)	(0.74)	(1.49)	(0.78)	(0.78)		(1.49)	(0.74)	(2.99)	
1~4Klb (4.45 ~17.79KN)	131	12.7	76.2	25.4	16.7	31.8	13.5	13.5	1/2" -20 UNF	32	16	57	0.8 (1.7)
	(5.15)	(0.50)	(3.00)	(1.00)	(0.65)	(1.25)	(0.53)	(0.53)		(1.25)	(0.62)	(2.24)	
5~10Klb (22.24 ~44.48KN)	171	19	95	38	19	38	20	20.5	3/4" -16 UNF	38	19	76.2	18.0 (4.0)
	(6.71)	(0.74)	(3.74)	(1.49)	(0.74)	(1.49)	(0.78)	(0.78)		(1.49)	(0.74)	(2.99)	

* Specifications are subject to change without notice

MAR.2001