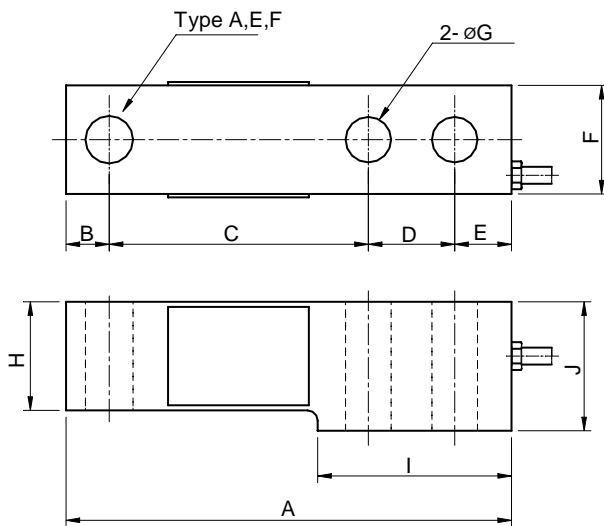


## Model OSBK Series

Shear Beam Load Cell (200Kg ~ 10t)

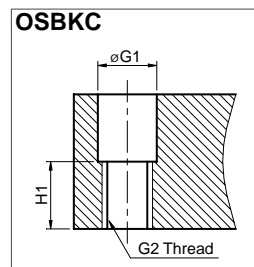
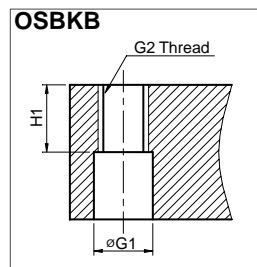
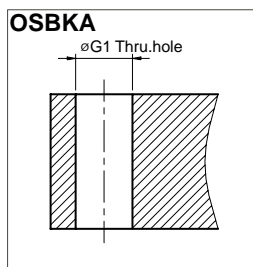


The OSBK series single ended shear beam load cell is designed for high accuracy platform scales and a variety of process weighing applications.

- Alloy tool steel construction for high accuracy.
- Electroless nickel plated for corrosion resistance.
- Fully sealed to IP67.

### SPECIFICATIONS

MODEL	OSBKA,OSBKB,OSBKC
Rated capacity (R.C.)	200,500kg, 1,2,3,5,10t 1,2,4,5,10,20Klb
Rated output(R.O.)	3mV/V ± 0.25%
Non-linearity	≤ 0.03% R.O.
Hysteresis	≤ 0.02% R.O.
Non-repeatability	≤ 0.02% R.O.
Creep error	≤ 0.03% in 20min.
Zero balance	≤ 1% R.O.
Compensated temperature range	-10 ~ 70°C
Operating temperature range	-20 ~ 80°C
Temp. effect on rated output	≤ 0.02% LOAD/10°C
Temp. effect on zero balance	≤ 0.03% R.O./10°C
Terminal input resistance	400 Ohms ±20 Ohms
Terminal output resistance	350 Ohms ±5 Ohms
Insulation resistance (Min.)	2000 MOhms at 50V DC
Excitation Voltage	10V(Recommended) /15V(Maximum)
Electrical connection	200Kg ~ 2t ø5mmx3m(Standard), 6m(Option) (22AWG x 4Core Shielded) 3t ~ 10t ø5mmx6m
Protection class	meets IP 67
Safe overload	150% R.C
Ultimate overload	300% R.C



### ORDERING INFORMATION

#### OSBKA - 5T

MODEL	CAPACITY
OSBKA	0.2, 0.5, 1, 2, 3, 5, 10t
OSBKB	0.4, 1, 2, 4, 5, 10, 20Klb
OSBKC	

### WIRING INFORMATION

RED	: EXC. (+)	WHITE	: EXC. (-)
GREEN	: SIG. (+)	BLUE	: SIG. (-)
BARE	: GND		

### Dimension-mm(inch)

Capacity	A	B	C	D	E	F	G	I	G1	G2	J	H	H1	Weight
0.2~2t (1.961 ~19.61KN)	131	12.7	76.2	25.4	16.7	31.8	13.5	57.2	13.5	M12x1.75P	38	32	16	0.8 Kg
	(5.15)	(0.50)	(3.00)	(1.00)	(0.65)	(1.25)	(0.53)	(2.25)	(0.53)		(1.50)	(1.25)	(0.62)	(1.7 lb)
3~5t (29.42 ~49.03KN)	171	19	95	38	19	38	20	76.2	20.5	M20x2.5P	44.5	38	19	1.8
	(6.71)	(0.74)	(3.74)	(1.49)	(0.74)	(1.49)	(0.78)	(3.00)	(0.78)		(1.75)	(1.49)	(0.74)	(4.0)
10t (98.07KN)	222.3	25.4	120.7	50.8	25.4	50.8	26.2	108	26.2	M24x2P	57.2	50.8	25	4.1
	(8.75)	(1.00)	(4.75)	(2.00)	(1.00)	(2.00)	(1.02)	(4.25)	(1.02)		(2.25)	(2.00)	(0.98)	(9.0)
0.4~4Klb ( 4.45 ~17.79KN)	131	12.7	76.2	25.4	16.7	31.8	13.5	57.2	13.5	1/2" -20 UNF	38	32	16	0.8
	(5.15)	(0.50)	(3.00)	(1.00)	(0.65)	(1.25)	(0.53)	(2.25)	(0.53)		(1.50)	(1.25)	(0.62)	(1.7)
5~10Klb (22.24 ~44.48KN)	171	19	95	38	19	38	20	76.2	20.5	3/4" -16 UNF	44.5	38	19	18.0
	(6.71)	(0.74)	(3.74)	(1.49)	(0.74)	(1.49)	(0.78)	(3.00)	(0.78)		(1.75)	(1.49)	(0.74)	(4.0)
20Klb (88.98KN)	222.3	25.4	120.7	50.8	25.4	50.8	26.2	108	26.2	1" -14 UNF	57.2	50.8	25	4.1
	(8.75)	(1.00)	(4.75)	(2.00)	(1.00)	(2.00)	(1.02)	(4.25)	(1.02)		(2.25)	(2.00)	(0.98)	(9.0)

\* Specifications are subject to change without notice

JULY.2001