

Model OBUX Series

Single Point Load Cell (50~ 500Kg)

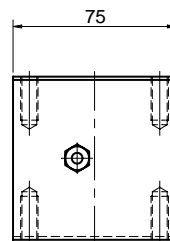
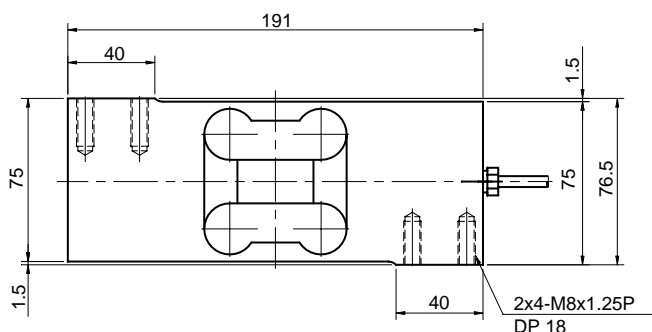
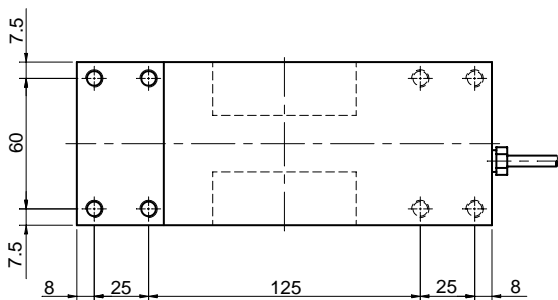
The OBUX series single point load cell is designed for platform scale, hopper scale and automatic check weighing systems where great accuracy, reliability and fast measurement are required.



SPECIFICATIONS

MODEL	OBUX	OBUXT
Rated capacity (R.C.)	50,100, 200, 300, 500Kg	
Rated output(R.O.)	2mV/V ± 10%	2mV/V ± 0.5%
Non-linearity	≤ 0.02% R.O.	
Hysteresis	≤ 0.02% R.O.	
Non-repeatability	≤ 0.02% R.O.	
Creep error	≤ 0.03% in 20min.	
Zero balance	≤ 5% R.O.	
Compensated temperature range	-10 ~ 70°C	
Operating temperature range	-20 ~ 80°C	
Temp. effect on rated output	≤ 0.012% LOAD/10°C	
Temp. effect on zero balance	≤ 0.04% R.O./10°C	
Terminal input resistance	415 Ohms ±15 Ohms	
Terminal output resistance	350 Ohms ±5 Ohms	
Insulation resistance (Min.)	2000 MOhms at 50V DC	
Excitation Voltage	10V(Recommended) /15V(Maximum)	
Electrical connection	ø5mmx3m(22AWG x 4Core Shielded)	
Protection class	meets IP 67	
Safe overload	150% R.C	
Ultimate overload	300% R.C	

Capacity	Allowable Platform Size
50~500Kg(0.981 ~4.903KN)	700 x 700mm



ORDERING INFORMATION

OBUX - 500K

MODEL	CAPACITY
OBUX	50,100, 200, 300, 500Kg
OBUXT	

WIRING INFORMATION

RED	: EXC. (+)	WHITE	: EXC. (-)
GREEN	: SIG. (+)	BLUE	: SIG. (-)
BARE	: GND		

* Specifications are subject to change without notice

OCT.2000

BONGSHIN LOADCELL CO., LTD.

148,SANGDAEWON-DONG,JUNGWON-KU, SEONGNAM-CITY, GYEONGGI-DO, KOREA
 TEL : 82-31-742-6661 www.bongshin.com
 FAX : 82-31-742-6664 E-mail : loadcell@bongshin.com