

## Model OBU Series

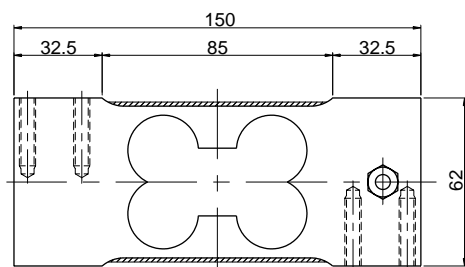
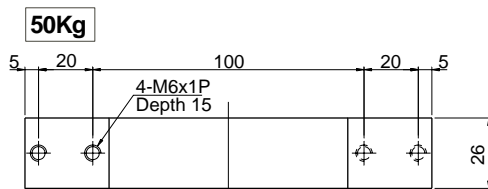
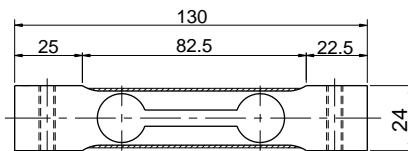
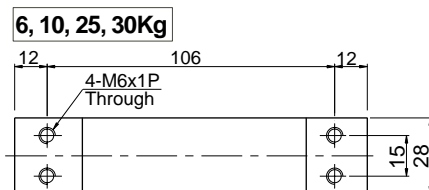
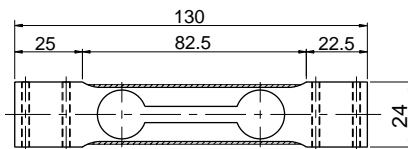
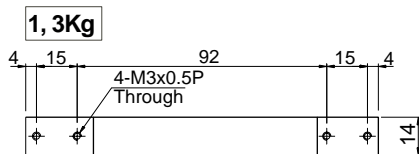
Single point  
Bending Beam Load Cell  
(1Kg ~250Kg)

The OBU series single point load cell is designed for low profile scales and automatic check weighing systems where great accuracy, reliability and fast measurement are required. All OBU load cell exceed the requirements of Handbook 44 for 3000d and meet OIML recommendations for 3000d

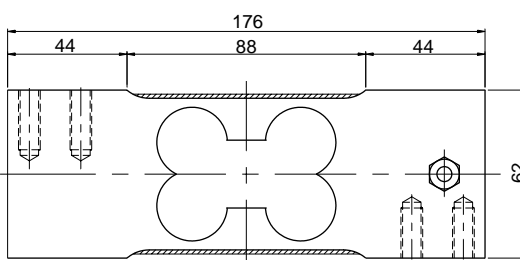
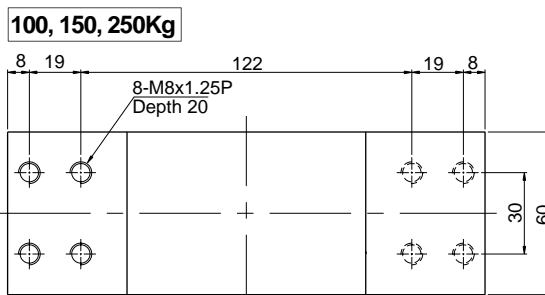


### SPECIFICATIONS

MODEL	OBU		
Rated capacity (R.C.)	1, 3 kg	6, 10, 25, 30, 50kg	100, 150, 250kg
Rated output(R.O.)	1mV/V± 10%	2mV/V ± 10%	2.2mV/V ± 10%
Non-linearity	≤ 0.02% R.O.		
Hysteresis	≤ 0.02% R.O.		
Non-repeatability	≤ 0.02% R.O.		
Creep error	≤ 0.03% in 20min.		
Zero balance	≤ 5% R.O.		
Compensated temperature range	-10 ~ 70°C		
Operating temperature range	-20 ~ 80°C		
Temp. effect on rated output	≤ 0.012% LOAD/10 °C		
Temp. effect on zero balance	≤ 0.04% R.O./10°C		
Terminal input resistance	415 Ohms ±10 Ohms		
Terminal output resistance	350 Ohms ±5 Ohms		
Insulation resistance (Min.)	2000 MOhms at 50V DC		
Excitation Voltage	10V(Recommended) /15V(Maximum)		
Electrical connection	1 ~30 Kg	ø3mmx1.5m(22AWG x 4Core Shielded)	
	50~250Kg	ø5mmx1.5m(22AWG x 4Core Shielded)	
Protection class	meets IP 65		
Safe overload	150% R.C		
Ultimate overload	300% R.C		



Capacity	Allowable Maximum Platform Size
1~ 3 Kg (98.1 ~29.42N)	200 x 200 mm
6~ 30 Kg (58.84 ~294.2N)	300 x 300 mm
50 Kg (490.3N)	400 x 500 mm
100~ 250 Kg (980.7 ~2452N)	400 x 600 mm



### ORDERING INFORMATION

**OBU 100**  
MODEL CAPACITY  
1, 3, 6, 10,  
25, 30, 50,  
100, 150,  
200 Kg

### WIRING INFORMATION

RED : EXC. (+)  
WHITE : EXC. (-)  
GREEN : SIG. (+)  
BLUE : SIG. (-)  
BARE : GND

\* Specifications are subject to change without notice

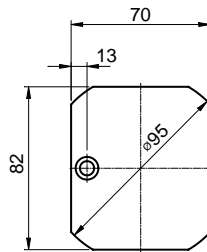
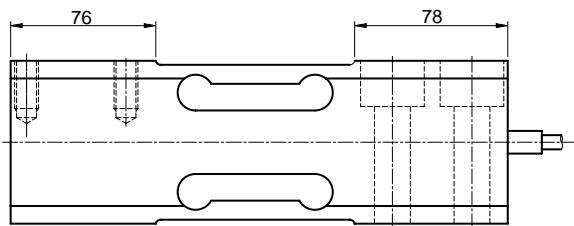
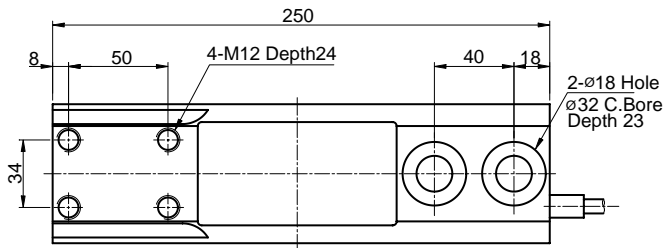
Apr .2001

BONGSHIN LOADCELL CO., LTD.

148,SANGDAEWON-DONG,JUNGWON-KU, SEONGNAM-CITY, GYEONGGI-DO, KOREA  
TEL : 82-31-742-6661 www.bongshin.com  
FAX : 82-31-742-6664 E-mail : loadcell@bongshin.com

## Model OBU Series

Single Point  
Bending Beam Load Cell (600Kg~800Kg)



The OBU series single point load cell is designed for low profile scales and automatic check weighing systems where great accuracy, reliability and fast measurement are required.

All OBU load cell exceed the requirements of Handbook 44 for 3000d and meet OIML recommendations for 3000d.

### SPECIFICATIONS

MODEL	OBU
Rated capacity (R.C.)	600, 800Kg
Rated output(R.O.)	2mV/V ± 10%
Non-linearity	≤ 0.02% R.O.
Hysteresis	≤ 0.02% R.O.
Non-repeatability	≤ 0.02% R.O.
Creep error	≤ 0.03% in 20min.
Zero balance	≤ 5% R.O.
Compensated temperature range	-10 ~ 70°C
Operating temperature range	-20 ~ 80°C
Temp. effect on rated output	≤ 0.012% LOAD/10 °C
Temp. effect on zero balance	≤ 0.04% R.O./10°C
Terminal input resistance	415 Ohms ±15 Ohms
Terminal output resistance	350 Ohms ±5 Ohms
Insulation resistance (Min.)	2000 MOhms at 50V DC
Excitation Voltage	10V(Recommended) /15V(Maximum)
Electrical connection	ø5mmx1.5m(22AWG x 4Core Shielded)
Protection class	meets IP 65
Safe overload	150% R.C
Ultimate overload	300% R.C

Capacity	Allowable Platform Size
600 ~800Kg(5.88 ~7.85KN)	450 x 650mm

#### ORDERING INFORMATION

##### OBU - 600K

MODEL CAPACITY  
600,800Kg

#### WIRING INFORMATION

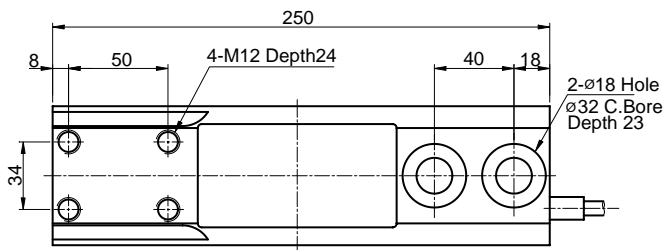
RED : EXC. (+) WHITE : EXC. (-)  
GREEN : SIG. (+) BLUE : SIG. (-)  
BARE : GND

## Model OB U Series

Single Point  
Bending Beam Load Cell (600Kg~800Kg)

The OBU series single point load cell is designed for low profile scales and automatic check weighing systems where great accuracy, reliability and fast measurement are required.

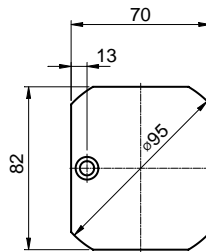
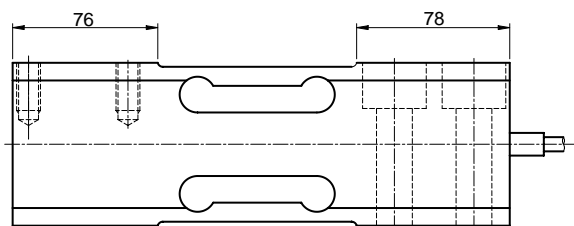
All OBU load cell exceed the requirements of Handbook 44 for 3000d and meet OIML recommendations for 3000d.



### SPECIFICATIONS

MODEL	OBU
Rated capacity (R.C.)	600, 800Kg
Rated output(R.O.)	2mV/V ± 10%
Non-linearity	≤ 0.02% R.O.
Hysteresis	≤ 0.02% R.O.
Non-repeatability	≤ 0.02% R.O.
Creep error	≤ 0.03% in 20min.
Zero balance	≤ 5% R.O.
Compensated temperature range	-10 ~ 70°C
Operating temperature range	-20 ~ 80°C
Temp. effect on rated output	≤ 0.012% LOAD/10°C
Temp. effect on zero balance	≤ 0.04% R.O./10°C
Terminal input resistance	415 Ohms ±15 Ohms
Terminal output resistance	350 Ohms ±5 Ohms
Insulation resistance (Min.)	2000 MOhms at 50V DC
Excitation Voltage	10V(Recommended) /15V(Maximum)
Electrical connection	ø5mmx1.5m(22AWG x 4Core Shielded)
Protection class	meets IP 65
Safe overload	150% R.C
Ultimate overload	300% R.C

Capacity	Allowable Platform Size
600 ~800Kg(5.88 ~7.85KN)	450 x 650mm



### ORDERING INFORMATION

#### OBU - 600K

MODEL CAPACITY  
600,800Kg

### WIRING INFORMATION

RED : EXC. (+) WHITE : EXC. (-)  
GREEN : SIG. (+) BLUE : SIG. (-)  
BARE : GND