

Model DBW Series

S- Beam Load Cell (500Kg ~5t)

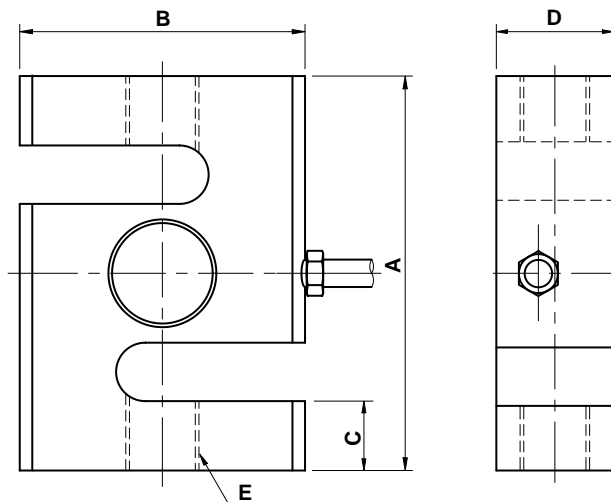


The DBW S-beam load cell is designed for industrial scale conversion and a variety of process applications.

- 17-4PH stainless steel construction for high accuracy and corrosion resistance.
- Fully welded seal with stainless steel cover for hostile environment applications.

SPECIFICATIONS

MODEL	DBW
Rated capacity (R.C.)	500Kg, 1, 2, 5t
Rated output(R.O.)	2mV/V \pm 0.5%
Non-linearity	\leq 0.05% R.O.
Hysteresis	\leq 0.05% R.O.
Non-repeatability	\leq 0.05% R.O.
Creep error	\leq 0.05% in 20min.
Zero balance	\leq 1% R.O.
Compensated temperature range	-10 ~ 70°C
Operating temperature range	-20 ~ 80°C
Temp. effect on rated output	\leq 0.1% LOAD/10 °C
Temp. effect on zero balance	\leq 0.05% R.O./10°C
Terminal input resistance	350 Ohms \pm 3.5 Ohms
Terminal output resistance	350 Ohms \pm 5 Ohms
Insulation resistance (Min.)	2000 MOhms at 50V DC
Excitation Voltage	10V(Recommended) /15V(Maximum)
Electrical connection	ϕ 5mmx3m(22AWG x 4Core Shielded)
Protection class	meets IP 67
Safe overload	150% R.C
Ultimate overload	300% R.C



ORDERING INFORMATION

DBW - 2T

MODEL CAPACITY
500Kg, 1, 2, 5t

WIRING INFORMATION

RED : EXC. (+) WHITE : EXC. (-)
GREEN : SIG. (+) BLUE : SIG. (-)
BARE : GND

Dimension-mm

Rated Capacity	A	B	C	D	E	Rod End Ball Joints NO.	Weight(kg)
500Kg~1t (4.90 ~9.807KN)	76.2	62	15.6	32	M12x1.75P	SRDB-2	0.73
2t (19.601KN)	108.0	78	19	32.0	M20x1.5P	SRDB-3	1.70
5t (49.03KN)	120.7	88	22.4	38	M24x2P	SRDB-4	2.10

* Specifications are subject to change without notice

SEP.2000