

Model CBFS Series

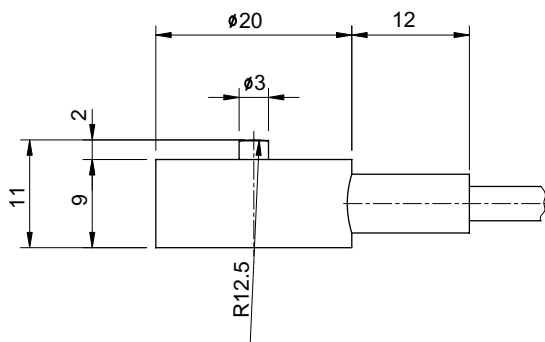
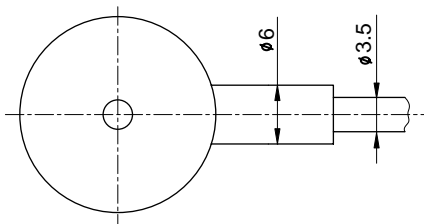
Compression

Miniature Load Cell(1~100Kg)

The model CBFS miniature type is designed for low profile compression service.

Its capacities range from 1Kg to 100Kg and it comes complete with 1.5m of load cell cable.

- low profile.
- Rated output(1mV/V).
- Protection class IP65.



SPECIFICATIONS

MODEL	CBFSA,CBFSA,CBFSC, CBFSD,CBFSE,CBFSF
Rated capacity (R.C.)	1, 3, 5, 10, 30, 50, 100Kg
Rated output (R.O.)	1mV/V \pm 0.3%
Non-linearity	\leq 2.0% R.O.
Hysteresis	\leq 1.0% R.O.
Non-repeatability	\leq 1.0% R.O.
Creep error	\leq 1.0% in 20min.
Zero balance	\leq 1% R.O.
Compensated temperature range	-10 ~ 40 °C
Operating temperature range	-20 ~ 70 °C
Temp. effect on rated output	\leq 0.03% LOAD/10 °C
Temp. effect on zero balance	\leq 0.03% R.O./10 °C
Terminal input resistance	350 Ohms \pm 3.5 Ohms
Terminal output resistance	350 Ohms \pm 3.5 Ohms
Insulation resistance (Min.)	2000 MOhms at 50V DC
Excitation voltage	10V(Recommended), 18V(Maximum)
Electrial connection	ϕ 3.5mmx1.5m(22AWG x 4Core Shielded)
Protection class	meets IP 65
Safe overload	150% R.C
Ultimate overload	300% R.C

ORDERING INFORMATION

CBFS - 10

MODEL	CAPACITY
CBFSA, CBFSA, CBFSC, CBFSD, CBFSE, CBFSF	1,3,5,10,30, 50,100Kg

WIRING INFORMATION

RED	: EXC. (+)	WHITE	: EXC. (-)
GREEN	: SIG. (+)	BLUE	: SIG. (-)
BARE	: GND		