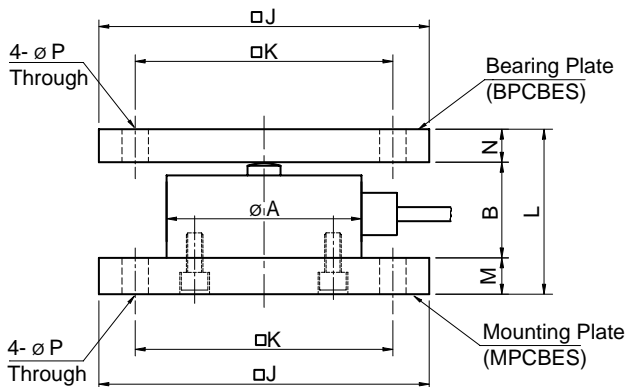
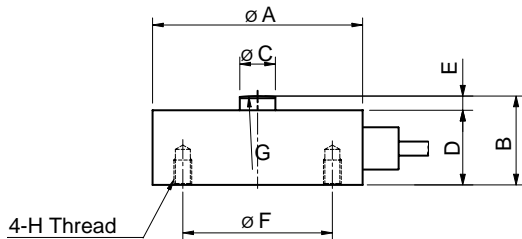
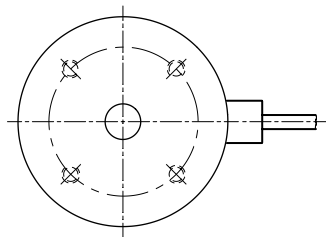


Model CBES Series

Compression
Low Profile Load Cell (50Kg ~ 20t)



Dimension-mm

| Capacity | A | B | C | D | E | F | G | H | J | K | L | M | N | P | Bearing plate | Mounting plate | Weight (kg) |
|---------------------------------|-----|----|----|----|---|----|------|----------------------|-----|-----|-----|----|----|----|---------------|----------------|-------------|
| 50kg ~ 2t (490.3N ~ 19.61KN) | 52 | 25 | 10 | 21 | 4 | 42 | R50 | M5x0.8P DEPTH 7 | 100 | 78 | 55 | 15 | 15 | 8 | BPCBES-1 | MPCBES-1 | 0.35 |
| 3t ~ 10t (29.42KN ~ 98.07KN) | 98 | 45 | 20 | 40 | 5 | 72 | R150 | M6x1P DEPTH 8 | 160 | 126 | 105 | 30 | 30 | 14 | BPCBES-2 | MPCBES-2 | 2.3 |
| 20t (196.1KN) | 118 | 50 | 20 | 45 | 5 | 90 | R250 | M8x1.25P DEPTH 15 | 160 | 126 | 110 | 30 | 30 | 14 | BPCBES-3 | MPCBES-3 | 3.7 |

The model CBES miniature type is designed for low profile compression service. Its compact size makes the cell ideal for a wide range of applications including testing & weighing systems.

- 17-4PH Stainless steel construction.
- Fully welded seal with stainless steel cover for hostile environment applications.
- Compact size with low profile.

SPECIFICATIONS

| MODEL | CBES |
|-------------------------------|--|
| Rated capacity (R.C.) | 50,100,200,500Kg 1,2,3,5,10,20t |
| Rated output(R.O.) | 2mV/V ± 0.25% |
| Non-linearity | ≤ 0.1% R.O. |
| Hysteresis | ≤ 0.1% R.O. |
| Non-repeatability | ≤ 0.1% R.O. |
| Creep error | ≤ 0.03% in 20min. |
| Zero balance | ≤ 1% R.O. |
| Compensated temperature range | -10 ~ 70 °C |
| Operating temperature range | -20 ~ 80 °C |
| Temp. effect on rated output | ≤ 0.1% LOAD/10 °C |
| Temp. effect on zero balance | ≤ 0.1% R.O./10 °C |
| Terminal input resistance | 700 Ohms ± 10 Ohms |
| Terminal output resistance | 700 Ohms ± 10 Ohms |
| Insulation resistance (Min.) | 2000 MOhms at 50V DC |
| Excitation Voltage | 10V(Recommended) /15V(Maximum) |
| Electrical connection | (50Kg ~ 2t) ø5mmx3m(22AWG x 4Core Shielded) (3t ~20t) ø9mmx5m(22AWG x 4Core Shielded) |
| Protection class | meets IP 67 |
| Safe overload | 150% R.C |
| Ultimate overload | 300% R.C |

ORDERING INFORMATION

CBES 1T
 MODEL CAPACITY
 50,100,200,500Kg
 1,2,3,5,10,20t

WIRING INFORMATION

RED : EXC. (+) WHITE : EXC. (-)
 GREEN : SIG. (+) BLUE : SIG. (-)
 BARE : GND